

August 2024 Programs



Purple Martin Summer Roost

Tuesday, August 6, 7:30PM - 8:30PM

Every year Purple Martins gather at roosting sites as they get ready for their journey. We will be watching Martins fly into the roost. You can bring your own binoculars; a limited number will be provided. Dress for the outdoors. Bug repellent recommended.

Registration is required by August 4.

National Lighthouse Day Bicycle Tour

Wednesday, August 7, 10:30AM - 1:30PM

Visit the North Pier Light and the Presque Isle Light Station during a tour of Presque Isle, learning local history as we go. Please wear a helmet and bring a water bottle and sunscreen. Children must be accompanied by an adult. **Limited to 20 participants.**

Registration is required by August 5.



Watershed Ed Teacher Workshop

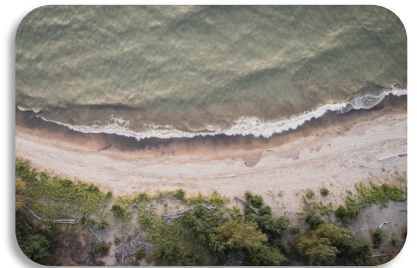
Monday, August 12, 12:30PM - 8:30PM & Tuesday, August 13, 8AM - 4PM

Apply your interest and dedication to water education by joining us in learning all about PA's exciting Watershed Education program. This is a two day event. Meeting at the Elk Creek Access Pavilion. Please bring water bottles and sunscreen and dress for the weather. Bring a packed lunch or dinner. **Limited to 25. Register by August 8. Cost is \$30.00 per participant.**

Adopt A Beach

Saturday, August 17, 9AM - 12PM

Join us in our efforts to keep our beaches clean. Participate in data and litter collection and help make a difference. Bags, gloves and site assignment given out at sign in at the AAUW Pavilion at the Tom Ridge Environmental Center. Children must be accompanied by an adult. This community science effort is also a great way to earn service hours.



Purple Martin Summer Roost

Tuesday, August 20, 7:30PM - 8:30PM

Every year Purple Martins gather at roosting sites as they get ready for their journey. We will be watching Martins fly into the roost. You can bring your own binoculars; a limited number will be provided. Dress for the outdoors. Bug repellent recommended.

Register by August 16.

August 2024 Programs

Virtual: Natural Wonders

Friday, August 23, 10AM - 11AM

Join Park educators for a virtual presentation of the wildlife of Presque Isle that is captured on video and photography. Participants will be sent a link a day prior to the program. **Registration is required by August 21.**



Virtual: Natural Wonders Lunch and Learn

Friday, August 23, 12PM - 12:30PM

Join us for lunch and learn about the natural wonders occurring at Presque Isle and Erie Bluffs State Parks. We will share what is happening in the parks through videos and photos captured by staff and camera traps. **Registration is required by August 21.**

Lagoon by Pontoon

Friday, Saturday and Sundays, May 24 through September 8

DCNR staff and volunteers offer a free interpretive Pontoon Boat ride throughout Misery Bay and the lagoons. Rides are offered Friday, Saturday, and Sunday at 9am, 10:30am, and 12:00pm. Rides are first come first serve, sign up 15 minutes prior to start time at pontoon station. You must be present to sign in. Limited to 16 per ride.



“Photographic Tribute to Wings Over Water”

Members of the Photographic Arts Society of Northwestern Pennsylvania have chosen to honor the migration of birds in the Great Lakes region in the photography exhibit, titled “Photographic Tribute to Wings Over Water” at The Tom Ridge Environmental Center. The exhibit is free and open to the public on the 2nd floor of the center. Open daily from 8am to 4pm. Exhibit displays are for sale, ask a Gift Shop associate for assistance.

Registration and payment is required where noted. Payment is due at least seven days prior to the program. Credit card and cash payments must be made in person at the park office at the Tom Ridge Environmental Center, M-F, 8am-4pm. Checks, made out to Commonwealth of PA, can be mailed to 301 Peninsula Dr., Ste 1, Erie PA 16505 or dropped off at the park office. To register for a program or for more information, please visit the online DCNR Calendar of Events at <http://events.dcnr.pa.gov>.



If you need an accommodation to participate in park activities due to a disability, please contact the park you plan to visit. With at least seven days’ notice, interpreters for people who are deaf or hard of hearing are available for educational programs.